



The ability to see the current *location* of your resources is essential information for any emergency service organisation. The ability to see the current *status* of all of your resources allows a greater degree of real-time monitoring and informed decision making. But the ability to keep precise records of where your resources have been, when they were there and precisely what they were doing during any given period of time provides the ultimate resource location tool.

APD's Co-Ordinator products provide exactly this functionality – a combination of both real-time and historical resource monitoring information; information which allows you to enhance and maintain your organisation's productivity and efficiency.

Location and status information from mobile resources is received and validated by a number of bearer-specific gateways. This information is then passed to the AVLS Service which sits at the core of the Co-Ordinator solution where it is simultaneously written to the Co-Ordinator SQL database and disseminated to connected Map Client applications and third-party systems. This ensures that not only are resource status updates processed and displayed in real-time, thereby keeping live operational information updated, but historical information about a resource's activities is also available for more in-depth analysis at a later date.

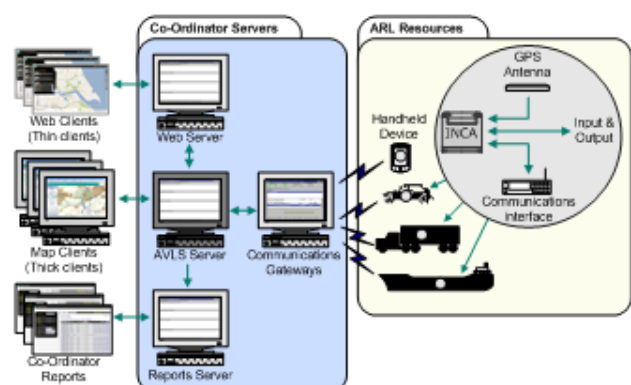
Mobile Resources

APD's Co-Ordinator solution is able to concurrently monitor a variety of different mobile resource types. These may be of a single type or a mix of the following devices:-

- APD's INCA or INCA2 units
- TETRA vehicle or hand-portable radios
- Trimble TrimTrac units
- or indeed virtually any GPS-enabled communications device

Different devices provide different levels of information – Co-Ordinator is designed to handle the variations in different device characteristics. Support for new devices can be added quickly and easily.

Overview of the Co-Ordinator components:





Communications Gateways

Flexibility is the key to the success of APD's Co-Ordinator solution which is able to operate over a variety of bearer technologies including GSM, GPRS, TETRA (Airwave, Motorola and EADS), Paknet, Mobitex and Wi-Fi. Gateways are modular and are able to co-exist within the same system therefore new or emerging bearer technologies can be incorporated into the solution simply by adding additional gateways.

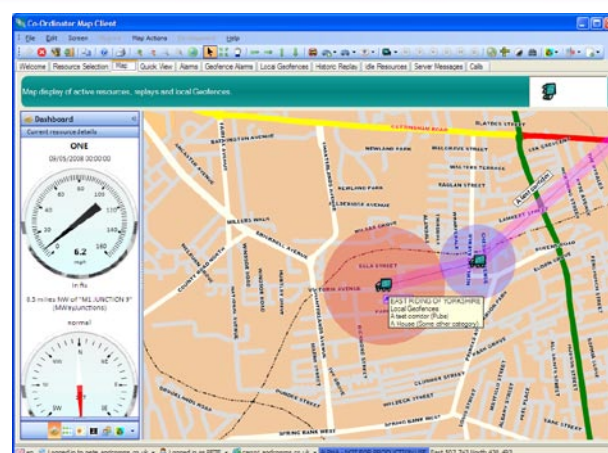
Co-Ordinator Map Client features:

Current Location of Resources

At a glance, a user is able to view the current location and status of their resources either in tabular format or as icons overlaid onto a map display. Depending upon the type of resource, information displayed includes time, position, speed, heading, status, active inputs and outputs plus supplementary information from other in-vehicle devices such as Mobile Data Terminals. Icons can be configured to change to reflect the current status of a resource allowing a user to instantly see the status of all of the resources they are monitoring.

Client-side Geofences

Each Co-Ordinator user is able to create and maintain Geofences which are specific to their requirements. These can be unique to each user or can be shared across all users.



Historical Replays

The Co-Ordinator Map Client also allows a user to quickly and easily select and replay historical resource information. A user is able to choose the resource(s) and time period they are interested in and, if required, can filter the results to display only the particular events that they are interested in. Replays can be presented in the form of "snail trails" or "moving icons" and can be saved for later use. This functionality is especially useful for post-event analysis allowing a user to review in detail the actions of all involved resources.

User Administration

System Administrators are able to configure the access rights of each Co-Ordinator user – this controls which resources a particular user is able to monitor and which features and functions they are able to access.

Contact APD

- APD Communications Ltd, Head Office, Newlands Centre, Inglemire Lane, Hull, HU6 7TQ, United Kingdom
- Sales and Marketing, Unit 31, Shenley Pavilions, Chalkdell Drive, Milton Keynes, MK5 6LB, United Kingdom
- UAE Office, Office 403, Al Niyadi Building, Airport Road, Abu Dhabi, UAE, P.O. Box 31954
- Tel: +44(0) 1482 808300 | Fax: +44 (0) 1482 803901 | UAE Tel : +971 (2) 443 9277 | Email: info@apdcomms.com | Web: www.apdcomms.com